

Primary Longman Express

2nd Edition



Pearson

Chris Gray • Rachel Jones

5A

Reading

Read the article. What do people in different countries do to be polite?

Be polite!

Good manners are important everywhere. However, behaviour that is polite in one country may be strange or even rude in another. Here are some tips for you.

Meeting people for the first time

What should you do when you first meet people in a different country?



In many western countries, like America and England, you should shake hands when you first meet somebody. Don't do this gently – a soft handshake means you are a weak person! When meeting the Masai people in East Africa, you should spit on your hand before shaking hands with another person.

French people kiss each other on the cheek. Some people do this four times! In New Zealand, Maori people touch their noses together to say 'hello'.



In Japan you should talk quietly when you meet people for the first time. In Australia and America it is fine to talk loudly.

In India you should bow politely with your hands together. Japanese people also bow when they meet – you should bow lower to a more important person.



Post-reading

In which places are these kinds of behaviour impolite? Match the behaviour with the places. Write a letter in each bracket.

- 1 talking loudly when meeting people for the first time ()
- 2 opening a present in front of the giver () ()
- 3 making a 🖐️ hand sign ()
- 4 making a 🖐️ hand sign ()

- A China
- B Japan
- C Middle East
- D Brazil
- E America

Answer the questions and blacken ● the circles.

- 5 Why shouldn't we give clocks to Chinese people?
- 6 Why should we shake hands firmly when we first meet someone in America?
- 7 What is the main idea of the section about hand signs?
 - ☐ A. English people are rude.
 - ☐ B. A hand sign can be good in one country, but bad in another.
 - ☐ C. People in Brazil do not understand Americans.
 - ☐ D. Western people like the 'thumbs up' sign.

- ★ 8 The writer suggests that ____ .
- ☐ A. we should not visit other countries
 - ☐ B. people in other countries are rude
 - ☐ C. people in different countries behave in the same way
 - ☐ D. it is a good idea to ask for advice about how to behave

Read the writer's conclusion in the last paragraph carefully. 🔍

Explore When to say 'Excuse me'

To get someone's attention

To ask someone to move so that you can walk past

To say sorry for doing something rude or embarrassing



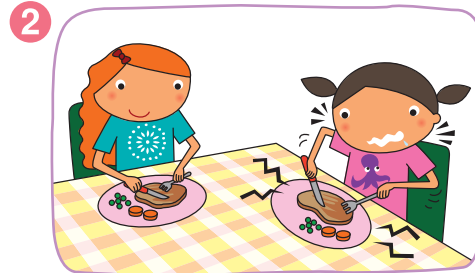
Key Words

Adverbs



(e.g. speak / talk / play music)

softly ↔ loudly



(e.g. eat)

quietly ↔ noisily



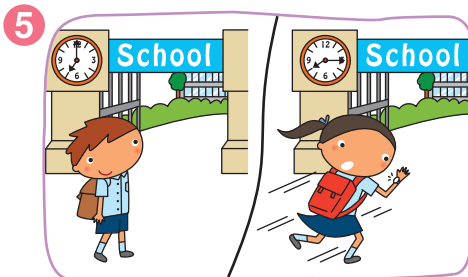
(e.g. wait)

patiently ↔ impatiently



(e.g. speak)

politely ↔ rudely / impolitely



(e.g. arrive)

early ↔ late

We can form the opposites by adding some letters (prefixes) at the beginning of words, e.g.

- | | |
|---------------------|---------------------|
| im | un |
| • <u>im</u> patient | • <u>un</u> tidy |
| • <u>im</u> polite | • <u>un</u> helpful |

Key Structures

| | | |
|----------|---------|------------------|
| He / She | speaks | rudely. |
| | arrives | late for school. |

We use **adverbs** to describe verbs.

| | | | | |
|----|-----------|------|--------|---------------|
| We | should | talk | softly | on the phone. |
| | shouldn't | | loudly | |

We usually add **-ly** or **-ily** to adjectives to form **adverbs**:

| | | | | | |
|-------|---|---------|-------|---|---------|
| soft | → | softly | noisy | → | noisily |
| quick | → | quickly | easy | → | easily |

Sometimes we don't:

| | | | | | |
|-------|---|-------|------|---|------|
| early | → | early | fast | → | fast |
| late | → | late | good | → | well |

Practice 1

| | | |
|----------|---------|------------------|
| He / She | speaks | rudely. |
| | arrives | late for school. |

Annie and Alan are new at Happy School. Finish what the class teacher tells the principal.

Annie isn't behaving well at school.

She often arrives **1** _____ for school.

She seldom arrives on time.

She speaks **2** _____ to the librarian.

She never says 'please' or 'thank you'.

She waits **3** _____ when she's at the bus stop. She sometimes jumps the queue.

She eats **4** _____ at lunchtime. She makes a lot of noise.

I'm not happy with Annie's behaviour at school.

I hope her behaviour will improve.



Alan is behaving very well. He always arrives **5** _____ for school.

He's never late. He has good manners. He waits **6** _____ in the school bus queue. He never pushes in. He speaks **7** _____ to the canteen helper.

He always says 'please' and 'thank you'. He eats his food **8** _____. He never makes a noise. He's the most polite pupil in the class.

I'm very happy with Alan's behaviour at school.



What should Annie do to improve her behaviour? Tell your classmate.

She should arrive early for school.

I agree. She should also ...



Let's read the words!

The magic 'e'

late politely phone use



A Add 'e' to the words. Say the new words and hear the difference.

tap _____ 1

kit _____ 2

not _____ 3

cub _____ 4

e



Do you remember that the **magic 'e'** changes the vowel sound?

B Put the words in the correct place. Then say the words and finish the rules.

late polite phone use game hide
hole cute take kite rose tube

a_e

late _____

i_e

polite _____

o_e

phone _____

u_e

use _____

a_e sounds like the name of the letter **A**.

i_e sounds like the name of the letter _____.

o_e sounds like the name of the letter _____.

u_e sounds like the name of the letter _____.



These long vowels make the same sound as the letter names.

Some notices give us information about school events.

Greenfield Primary School

3rd September 20XX

Dear Parents,

HKYO Concert at City Hall

The Hong Kong Youth Orchestra (HKYO) will be performing at City Hall on 24th October (Sunday) at 3:00 p.m. We would like to take all Music Club members to the concert.

Ticket price: Tickets cost \$30 each.

Meeting time and place: We will meet at the school entrance at 2:00 p.m. and the coach will leave at 2:15 p.m. Please be punctual. We will be back at school at 6:00 p.m.

Clothing: There is no need to wear school uniform but pupils should dress neatly.

Remarks:

- Pupils can bring money to buy a drink during the intermission.
- Pupils should not talk on mobile phones during the concert.
- Pupils should sit properly during the concert.

Kindly fill in the reply slip and return it to the school office by 10th September 20XX.

Yours faithfully,
Jenny Wong
The Principal

Reply Slip

My child, Bella Lam, will / ~~will not~~ go to the HKYO Concert. Thank you.

Parent's name: Susan Lam

Parent's signature: S. Lam

Date: 4th September 20XX

Answer the questions.

- Who is this notice for?
- What is mentioned in the notice? (You can choose more than one answer.)
 - ☐ A. how to pay for the ticket
 - ☐ B. where to meet
 - ☐ C. what time the concert ends
 - ☐ D. the cost of the concert
- Who signed the reply slip?
- When did you last get a school notice? What was it about?

Mini Task

Work in pairs. Write a list of rules for the Music Club members to follow when they go to the concert.